

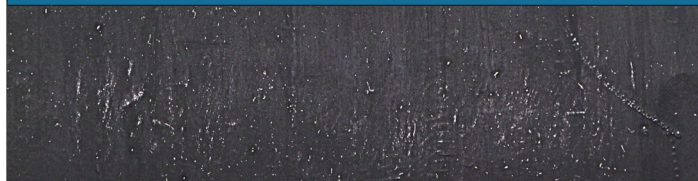


MIR PART NUMBER: 1965316

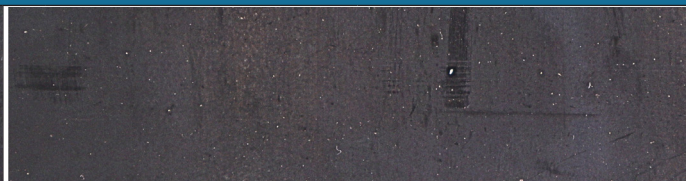
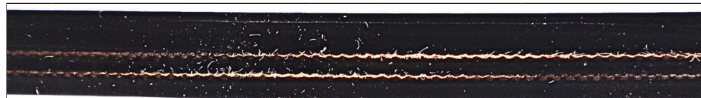
General Information:

Product Description:	M 220/I R15/R30 BLACK MOR CBS CONV BELT
Features:	Moderate Oil Resistant
Market Segment:	-
Applications:	Wood Chips, Linseed, Cottonseed, Corn Kernels, Whole Soybeans

Belt Construction:



Top Side (Material):	MOR	
Top Side (Surface):	Smooth	
Top Side (Thickness):	0.13 in	3.18 mm
Top Side (Color):	Black	
Top Side Shore:	65A +/-5 Shore	



Bottom Side (Material):	MOR	
Bottom Side (Surface):	Smooth	
Bottom Side (Thickness):	0.06 in	1.59 mm
Bottom Side (Color):	-	
Bottom Side Shore:	-	

Number of plies:	2
Weft:	-

Technical Belt Data:

Foodgrade (FG):	No	
Flame Retardant (FR):	No	
Belt Weight:	0.39 lbs/ft²	1.9 kg/m²
Belt Thickness:	0.29 in	7.39 mm
Material Between Plies:	-	
Pulley Diameter (minimum):	16 in	406.4 mm

Tensile Rating:	220 lbs/in	
Working Temperature Range:	-40 to 250 °F	-40 to 121 °C
Hardness Topside:	65A +/-5 Shore	
Force at 1% Elongation (static) / k1% Relaxed:	220 (working load) lbs/in	38.5 (working load) N/mm
Back Flexing:	16 in	406.4 mm
Anti-Static:	No	

Joining Method:

Vulcanized Step Splice, Mechanical Fasteners

Additional Information:

Belting Solved

24/7

On-Site Service 877 MIR-BELT



mir-belting.com
mir@mir-belting.com